

Tips & Tricks

January 7, 2009

- 1) Restricting users from writing to USB flash drives in Windows XP
- 2) Quickly search Microsoft Knowledge Base articles
- 3) How to deal with 50 site limit in TOC Web part in MOSS 2007



Zubair Alexander

Microsoft MVP – Directory Services

Microsoft Certified Trainer



Restricting Users from Writing to USB Flash Drives in Windows XP

- Companies with higher security requirements are concerned about users potentially copying confidential data to their USB flash drives
- Windows XP Service Pack 2 offers a solution
- A registry hack will make the USB drive read-only so users can't copy data



Restricting Users from Writing to USB Flash Drives in Windows XP

- Start the registry editor (regedit.exe).
- Go to
HKEY_LOCAL_MACHINE\SYSTEM\CurrentControlSet\Control.
- From the **Edit** menu, select **New, Key**, and type **StorageDevicePolicies**. If this key already exists then skip to the next step.

Restricting Users from Writing to USB Flash Drives in Windows XP

- Highlight the newly created key “StorageDevicePolicies” and from the **Edit** menu select **New, DWORD Value**, type **WriteProtect** and press Enter.
- Double-click WriteProtect and enter **1** for **Value data**. The value 1 makes all the USB drives read-only, a value of 0 will make them writable.
- Close the registry editor and restart the computer.

Quickly Search the KB Articles

- Modify the registry to add the capability to quickly search the KB articles (formerly referred to as Q articles).
- Works on at least the following operating systems:
 - Windows XP
 - Windows Vista
 - Windows Server 2003
 - Windows Server 2008



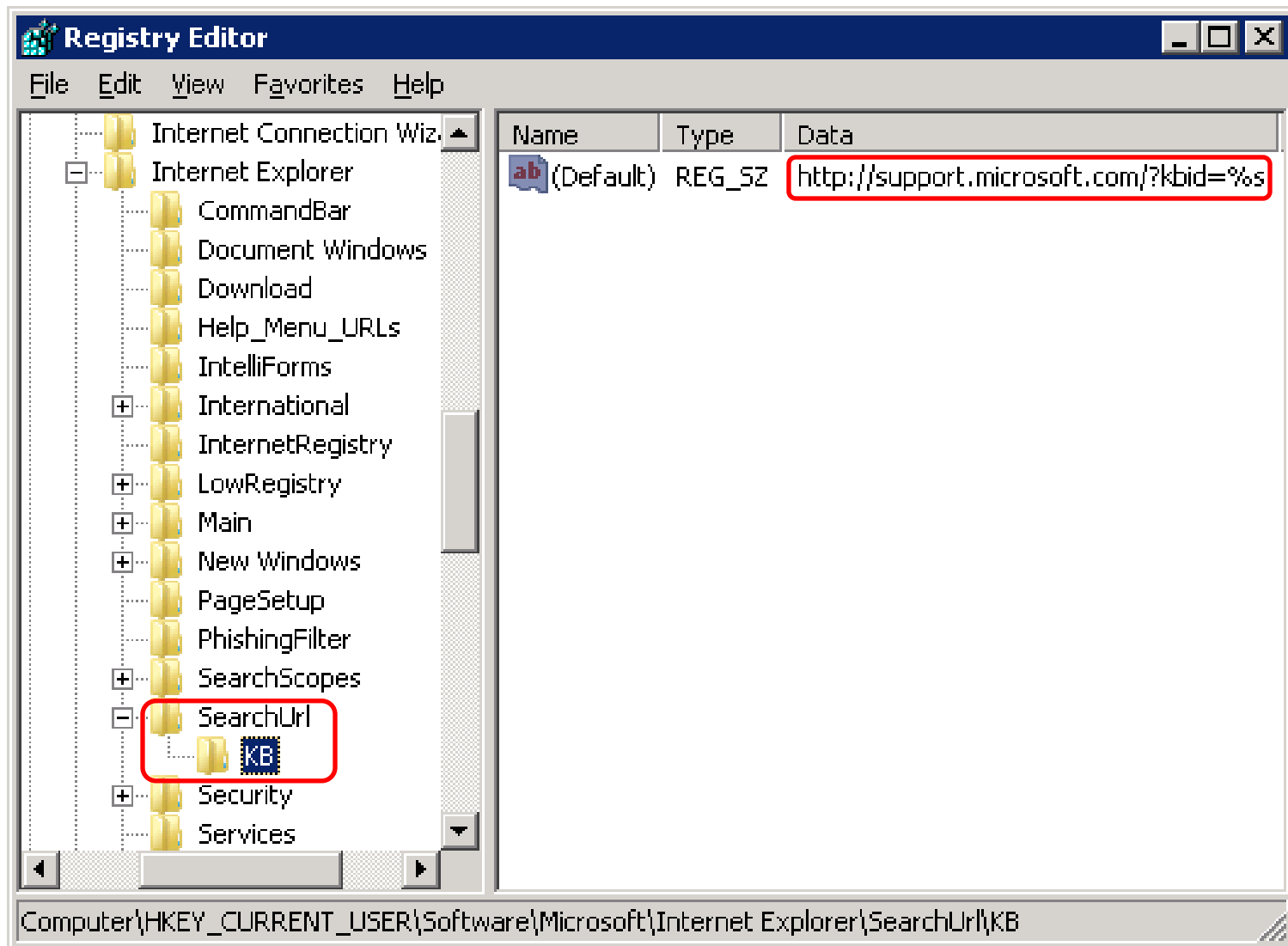
Quickly Search the KB Articles

- Start the registry editor (regedit.exe).
- Go to
HKEY_CURRENT_USER\Software\Microsoft\Internet Explorer\SearchUrl.
- From the **Edit** menu, select **New, Key** and name it **KB**.
- Select the new **KB** folder that you just created under the SearchUrl folder and in the right-hand pane double-click Default.

Quickly Search the KB Articles

- For **Value data** enter **<http://support.microsoft.com/?kbid=%s>**.
- Click OK and close the registry editor.
- No need to reboot the computer.
- Go to your Web browser, type KB followed by the KB article number. (e.g. kb 823980)
- This tip works both on Internet Explorer and Mozilla Firefox browsers.

Quickly Search the KB Articles



How to Deal with 50 Site Limit in TOC Web Part in MOSS 2007

- The Table of Content (TOC) Web part is used to display the site directory listing in SharePoint
 - For example, if you upgrade from SPS 2003 to MOSS 2007, the TOC Web part will display only the first 50 sites
- Edit the IIS web.config file located at `C:\inetpub\wwwroot\wss\VirtualDirectories\YourSiteName80` on each Web front-end server

How to Deal with 50 Site Limit in TOC Web Part in MOSS 2007

- **Warning!** Make sure that you edit the correct web.config file.
 - DO NOT edit the SharePoint web.config file located at C:\Program Files\Common Files\Microsoft Shared\Web Server Extensions\12\CONFIG\.
- Set the DynamicChildLimit value to “0” if you don’t want any limits. Otherwise, set it to a number that you would like.

How to Deal with 50 Site Limit in TOC Web Part in MOSS 2007

- For each provider listed on the next slide, add the `DynamicChildLimit` value at the end of each of the four sections. The example shown sets the size limit to zero (unlimited).
 - ***`DynamicChildLimit="0"`***

How to Deal with 50 Site Limit in TOC Web Part in MOSS 2007

```
<add name="GlobalNavSiteMapProvider" description="CMS provider for Global navigation" type="Microsoft.SharePoint.Publishing.Navigation.PortalSiteMapProvider, Microsoft.SharePoint.Publishing, Version=12.0.0.0, Culture=neutral, PublicKeyToken=70ac9876ab9ca575" NavigationType="Global" EncodeOutput="true" DynamicChildLimit="0"/>
```

```
<add name="CombinedNavSiteMapProvider" description="CMS provider for Combined navigation" type="Microsoft.SharePoint.Publishing.Navigation.PortalSiteMapProvider, Microsoft.SharePoint.Publishing, Version=12.0.0.0, Culture=neutral, PublicKeyToken=70ac9876ab9ca575" NavigationType="Combined" EncodeOutput="true" DynamicChildLimit="0"/>
```

```
<add name="CurrentNavSiteMapProvider" description="CMS provider for Current navigation" type="Microsoft.SharePoint.Publishing.Navigation.PortalSiteMapProvider, Microsoft.SharePoint.Publishing, Version=12.0.0.0, Culture=neutral, PublicKeyToken=70ac9876ab9ca575" NavigationType="Current" EncodeOutput="true" DynamicChildLimit="0"/>
```

```
<add name="CurrentNavSiteMapProviderNoEncode" description="CMS provider for Current navigation, no encoding of output" type="Microsoft.SharePoint.Publishing.Navigation.PortalSiteMapProvider, Microsoft.SharePoint.Publishing, Version=12.0.0.0, Culture=neutral, PublicKeyToken=70ac9876ab9ca575" NavigationType="Current" EncodeOutput="false" DynamicChildLimit="0"/>
```

Tips & Tricks

January 7, 2009

Questions & Answers

www.winnetusergroup.com

Windows Networking User Group

